

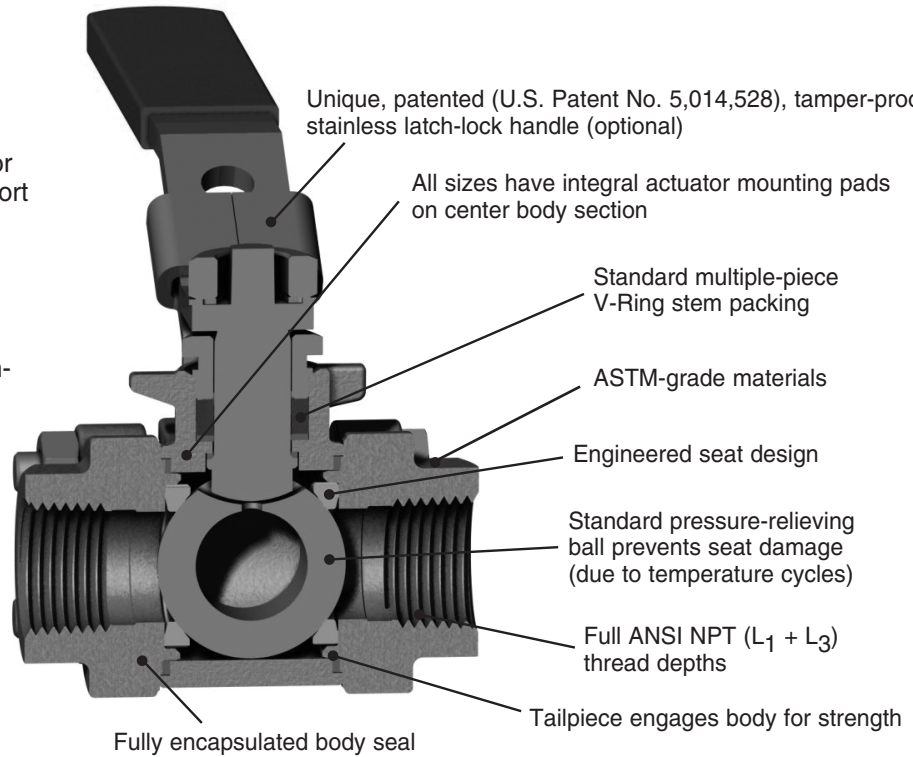
8633 AND 8623 THREE-PIECE BALL VALVES

The 8633 and 8623 Series ball valves are the most advanced 3-piece ball valves available.

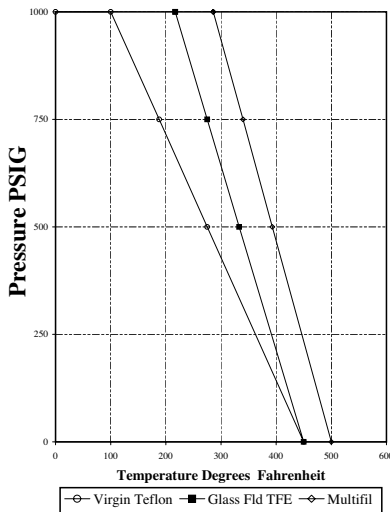
Designed with extensive end-user and distributor input, they include such standard features as: full-port design, multi-piece V-Ring stem packing for longer leak-free life; full NPT thread depths and superior ASTM-grade materials of construction and the highest pressure ratings in the industry.

The 3-piece design makes in-line maintenance and repairs possible. The valves utilize special high-cycle-life seats with the lowest operating torques. And when one or both ends are dismantled to service the valve, the actuator does not require removal. This combination provides the most economical actuated ball valve available.

Conforms to: WW-V 35, Class A, C & D, Style 1, End Connection A (threaded), MSS-SP-110.



PERFORMANCE DATA



TORQUE RATING AND C_v

| VALVE SIZE | MAXIMUM BREAKAWAY TORQUE (in lbs.) | C_v (GPM) |
|------------|------------------------------------|-------------|
| 1/4 - 3/8 | 30 | 9 |
| 1/2 | 50 | 10 |
| 3/4 | 70 | 31 |
| 1 | 125 | 49 |
| 1-1/4 | 210 | 85 |
| 1-1/2 | 360 | 110 |
| 2 | 600 | 360 |

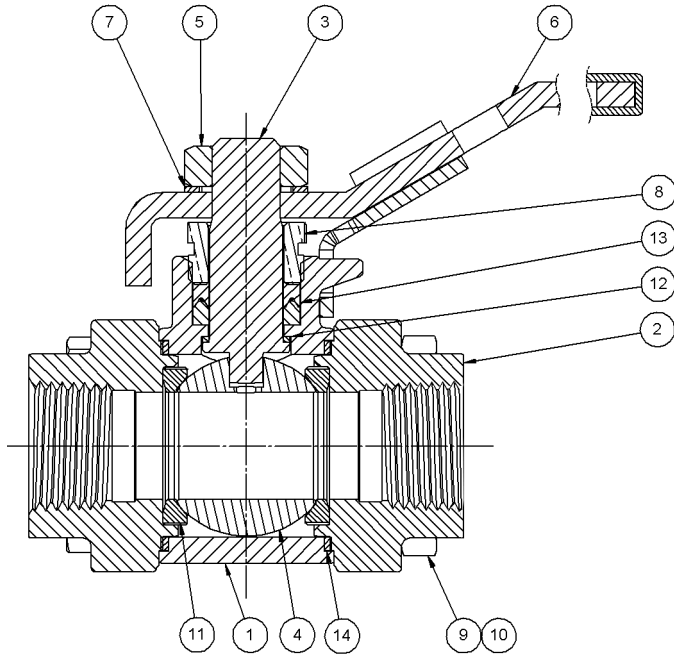
SPECIFICATIONS

Approved valves shall be Hammond Valve 8633 Series (for stainless-steel applications) or 8623 Series (for carbon-steel applications) or approved equal. Valves shall be of full-port design and include multiple-piece V-Ring stem packing, full ANSI NPT thread depths and ASTM-grade body/tailpiece materials. All valve sizes shall accommodate actuator mounting on the valve's center section. Each valve shall be tested for zero leakage. Approved valves to accommodate tamper-proof latch-lock handle where necessary or required.

The information presented on this sheet is correct at the time of publication. Hammond Valve reserves the right to change design, and/or material specifications without notice. For the Installation, Operation and Maintenance Manual (IOM) see the engineering section on our website. For the most current information access www.hammondvalve.com



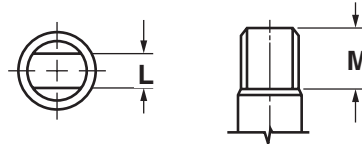
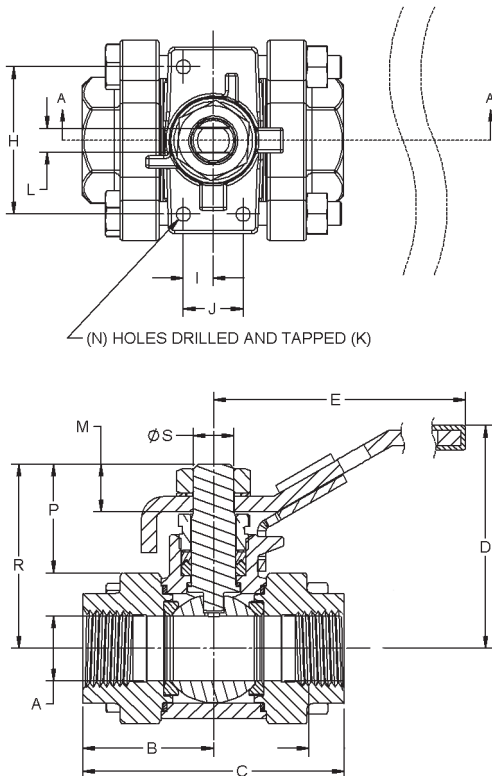
MATERIAL LIST



| PART | 8623 | 8633 |
|--------------------|--|--|
| 1. Body | Carbon Steel ASTM A216, WCB | Stainless Steel ASTM A351/744, CF8M |
| 2. Endcap | Carbon Steel ASTM A216, WCB | Stainless Steel ASTM A351/744, CF3M |
| 3. Stem | Stainless Steel ASTM A276, Type 316 | Stainless Steel ASTM A276, Type 316 |
| 4. Ball | Stainless Steel ASTM A276, Type 316 | Stainless Steel ASTM A276, Type 316 |
| 5. Handle Nut | Stainless Steel 18-8 | Stainless Steel 18-8 |
| 6. Handle Assembly | Stainless Steel 18-8 | Stainless Steel 18-8 |
| 7. Lock Washer | Stainless Steel Type 304 | Stainless Steel Type 304 |
| 8. Packing Nut | Carbon Steel AISI - 12L14 | Stainless Steel ASTM A276, Type 316 |
| 9. Body Capscrews | SAE J429 Gr.8 Zinc-Plated | ASTM F593 Gr. C |
| 10. Body Nuts | SAE J429 Gr.8 Zinc-Plated | ASTM F593 Gr. C |
| 11. Seats (02) | 15% Glass-Filled, Reinforced PTFE | 15% Glass-Filled Reinforced PTFE |
| 12. Thrust Washer | PTFE | PTFE |
| 13. Packing | PTFE | PTFE |
| 14. Body Seal | PTFE (01) Graphoil (03) | PTFE (01) Graphoil (03) |

DIMENSIONS

N = NUMBER OF ACTUATOR MOUNTING PADS HOLES



DIMENSIONS – INCHES AND MILLIMETERS (8600 SERIES BALL VALVES)

| SIZE | 1/4" | | 3/8" | | 1/2" | | 3/4" | | 1" | | 1-1/4" | | 1-1/2" | | 2" | |
|------|-------|-------|-------|-------|-------|-------|-------|-------|-------|-------|--------|-------|--------|-------|--------|-------|
| | IN | MM | IN | MM | IN | MM | IN | MM | IN | MM | IN | MM | IN | MM | IN | MM |
| A | .48 | 12.2 | .50 | 12.7 | .69 | 17.5 | .75 | 19.1 | 1.00 | 25.4 | 1.25 | 31.8 | 1.50 | 38.1 | 2.00 | 50.8 |
| B | 1.28 | 32.5 | 1.28 | 32.5 | 1.40 | 35.6 | 1.72 | 43.7 | 1.94 | 49.3 | 1.38 | 35.1 | 2.62 | 66.5 | 3.05 | 77.5 |
| C | 2.56 | 65.0 | 2.56 | 65.0 | 2.81 | 71.4 | 3.44 | 87.4 | 3.87 | 98.3 | 4.75 | 121.0 | 5.24 | 133.0 | 6.10 | 154.9 |
| D | 1.83 | 46.5 | 1.83 | 46.5 | 2.52 | 64.0 | 2.79 | 70.9 | 2.93 | 74.4 | 3.18 | 80.8 | 3.37 | 85.6 | 3.60 | 91.4 |
| E | 3.88 | 98.6 | 3.88 | 98.6 | 5.88 | 149.0 | 5.88 | 149.0 | 5.88 | 149.0 | 7.75 | 197.0 | 7.75 | 197.0 | 7.75 | 197.0 |
| H | 1.12 | 28.4 | 1.12 | 28.4 | 1.58 | 40.1 | 1.58 | 40.1 | 1.58 | 40.1 | 1.46 | 37.1 | 1.63 | 41.4 | 2.25 | 57.2 |
| I | — | — | — | — | .32 | 8.1 | .32 | 8.1 | .32 | 8.1 | .56 | 14.2 | .76 | 19.3 | 1.05 | 26.7 |
| J | — | — | — | — | .64 | 16.3 | .64 | 16.3 | .64 | 16.3 | 1.13 | 28.7 | 1.53 | 38.9 | 2.10 | 53.3 |
| K | 10–24 | | 10–24 | | 10–24 | | 10–24 | | 10–24 | | 1/4–20 | | 1/4–20 | | 1/4–20 | |
| L | .197 | 5.0 | .197 | 5.0 | .276 | 7.0 | .276 | 7.0 | .276 | 7.0 | .356 | 9.0 | .356 | 9.0 | .356 | 9.0 |
| M | .33 | 8.4 | .33 | 8.4 | .51 | 13.1 | .51 | 13.1 | .51 | 13.1 | .60 | 15.4 | .605 | 15.4 | .605 | 15.4 |
| N | 2 | | 2 | | 3 | | 3 | | 3 | | 4 | | 4 | | 4 | |
| P | .945 | 24.0 | .945 | 24.0 | 1.25 | 31.75 | 1.25 | 31.75 | 1.25 | 31.75 | 1.375 | 34.93 | 1.50 | 38.10 | 1.50 | 38.10 |
| R | 1.63 | 41.33 | 1.63 | 41.40 | 1.97 | 50.04 | 2.30 | 58.37 | 2.47 | 62.79 | 2.90 | 73.74 | 3.14 | 79.73 | 3.57 | 90.63 |
| S | .31 | 7.87 | .31 | 7.90 | .44 | 11.07 | .44 | 11.07 | .44 | 11.07 | .56 | 14.25 | .56 | 14.25 | .56 | 14.25 |
| WT. | — | — | — | — | 1.53 | 3.37 | 2.51 | 5.52 | 3.27 | 7.19 | 5.24 | 11.53 | 7.32 | 16.10 | 11.91 | 26.20 |
| | LBS | KILOS | LBS | KILOS | LBS | KILOS | LBS | KILOS | LBS | KILOS | LBS | KILOS | LBS | KILOS | LBS | KILOS |

The information presented on this sheet is correct at the time of publication. Hammond Valve reserves the right to change design, and/or material specifications without notice. For the Installation, Operation and Maintenance Manual (IOM) see the engineering section on our website. For the most current information access www.hammondvalve.com



HAMMONDVALVE