

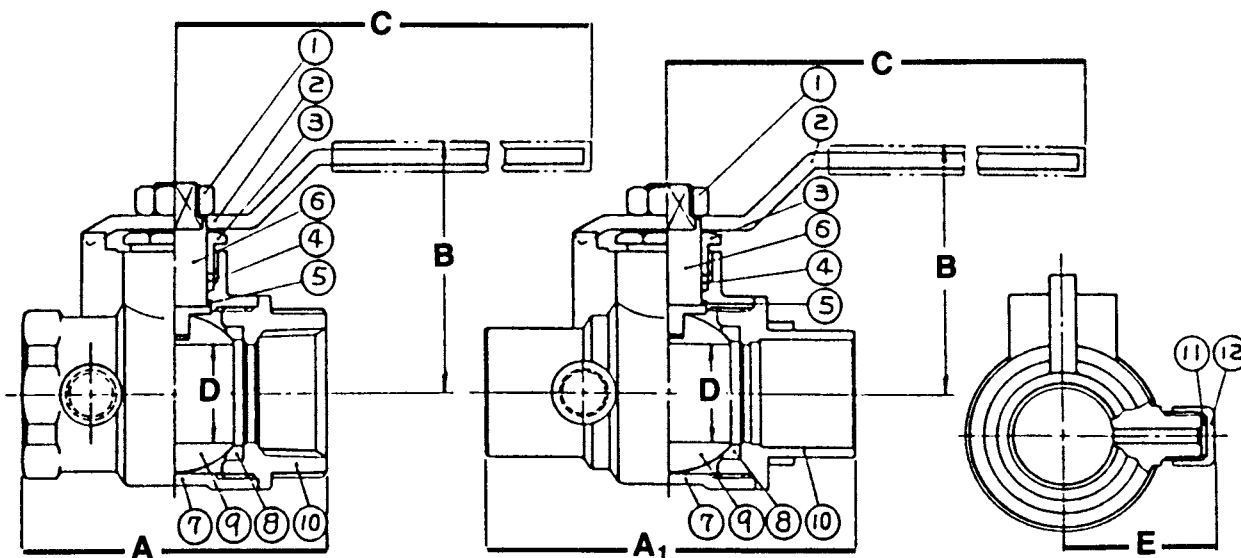
# 8701/8711\* 1/2"-1"

Drainable Brass Ball Valve  
 Two Piece  
 Full Port  
 600 psig WOG  
 Threaded or Solder Ends  
 Blow-Out Proof Stem  
 ASME A112.4.14

## MATERIALS LIST

\*Not intended for use in potable water.

ITEM	PART	MATERIALS	ASTM SPEC.
1	HANDLE NUT	STEEL, ZINC PLATED	AISI TYPE 1010
2	HANDLE, PLASTIC COATED	STEEL, ZINC PLATED	AISI TYPE 1010
3	STUFFING NUT	BRASS ROD	ASTM B124,C37700
4	PACKING RING	TFE	
5	THRUST WASHER	TFE	
6	STEM	BRASS ROD	ASTM B124,C37700
7	BODY	BRASS FORGING	ASTM B283,C37700
8	BALL SEALS	TFE	
9	BALL/CHROME	BRASS FORGING	ASTM B283,C37700
10	END PIECE	BRASS FORGING	ASTM B283,C37700
11	DRAIN CAP WASHER	PLASTIC	POLYETHYLENE
12	DRAIN CAP	BRASS FORGING	ASTM B283,C37700



**8701 Threaded**

**8711 Solder**

## DIMENSIONS

	UNITS	A	A-1	B	C	D	E	Cv	TORQUE IN LBS.
1/2	INCHES	2	2.13	1.53	3.31	0.5	1	18	32
	mm	51	54	39	84	13	25		
3/4	INCHES	2.44	2.91	2	4.66	0.78	1.19	34	50
	mm	62	74	51	118	20	30		
1	INCHES	3	3.53	2.16	4.66	1	1.38	57	60
	mm	76	90	55	118	25	35		

The information presented on this sheet is correct at time of publication. Hammond Valve reserves the right to change design and/or materials without notice. For our Installation, Operation and Maintenance Manual and the most current product information go to [www.hammondvalve.com](http://www.hammondvalve.com). Hammond Valve is a registered trademark of Milwaukee Valve.

⚠ State of California Prop 65 **WARNING:** Cancer and Reproductive Harm. For more information visit [www.p65warnings.ca.gov](http://www.p65warnings.ca.gov).