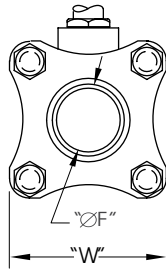


8614-22-G/8613-22-G* 1/2"-2"

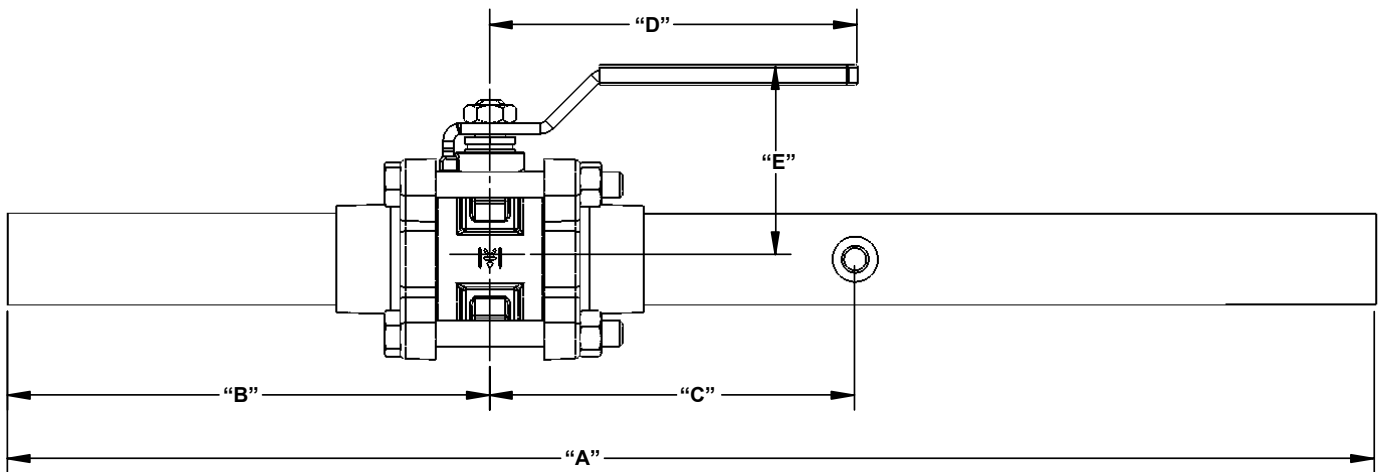
**Bronze Ball Valve
Three Piece
Full Port
600 WOG
Extended Tube Ends with 1/8" NPT Gauge Port
Inline Repairable
Blow-Out Proof Stem
MSS SP-110**

***Not intended for use in potable water.**



Available Options

- Male Tube Ends - Type "K" (Standard)
- Female Tube Ends - Type "L" (-F)
- Cleaned For Oxygen Service In Accordance With NFPA 99C (-OC)
- Stainless-Steel Ball And Stem (-S)
- Stainless-Steel Locking Lever (-LD)
- Oval Handle (-OH)
- Oval Locking Handle (-LO)
- Stem Extension (-XH)
- Stainless-Steel Lever Handle (-SH)



DIMENSIONS

	UNITS	1/2" DN15	3/4" DN20	1" DN25	1-1/4" DN32	1-1/2" DN40	2" DN50
A	INCHES	21.00	21.00	21.00	21.00	21.00	21.00
	mm	533	533	533	533	533	533
B	INCHES	6.90	7.00	7.00	7.40	7.60	7.70
	mm	175	178	178	188	193	196
C	INCHES	6.40	6.10	5.90	5.50	5.40	5.00
	mm	163	155	150	140	137	127
D	INCHES	3.80	4.80	4.80	6.50	7.40	7.40
	mm	97	122	122	165	188	188
E	INCHES	1.60	2.30	2.40	2.80	3.10	3.60
	mm	41	58	61	71	79	91
F	INCHES	0.50	0.75	1.00	1.25	1.50	2.00
	mm	13	19	25	32	38	51
G	INCHES	1.90	2.20	2.50	3.00	3.00	4.00
	mm	48	56	64	76	76	102
Cv		17	31	60	110	185	360

Note: DN (Diameter Nominal) = Metric equivalent size.

** Pressure temperature charts contain valve seat (1) Ball and stem are stainless for 350STE and body ratings for standard valves. Solder end valves are de-rated by the limitations of the joint as specified in ASME 16.18. Brazing installations can be likewise derated. Consult ASME 16.18 and the American Welding Society for the actual joint ratings of the material being used for the specific application. Pressure and Temperature ratings may be further derated in accordance with the pressure rating associated with the type of copper tube used for the stub end. Call the factory for accurate application data.

The information presented on this sheet is correct at time of publication. Hammond Valve reserves the right to change design and/or materials without notice. For our Installation, Operation and Maintenance Manual and the most current product information go to www.hammondvalve.com. Hammond Valve is a registered trademark of Milwaukee Valve.

⚠ State of California Prop 65 **WARNING:** Cancer and Reproductive Harm. For more information visit www.p65warnings.ca.gov.

